

CERTIFIED LAND CORNER RECORDATION

DESCRIPTION OF CORNER EVIDENCE FOUND, AND ORIGINAL RECORD (If known)

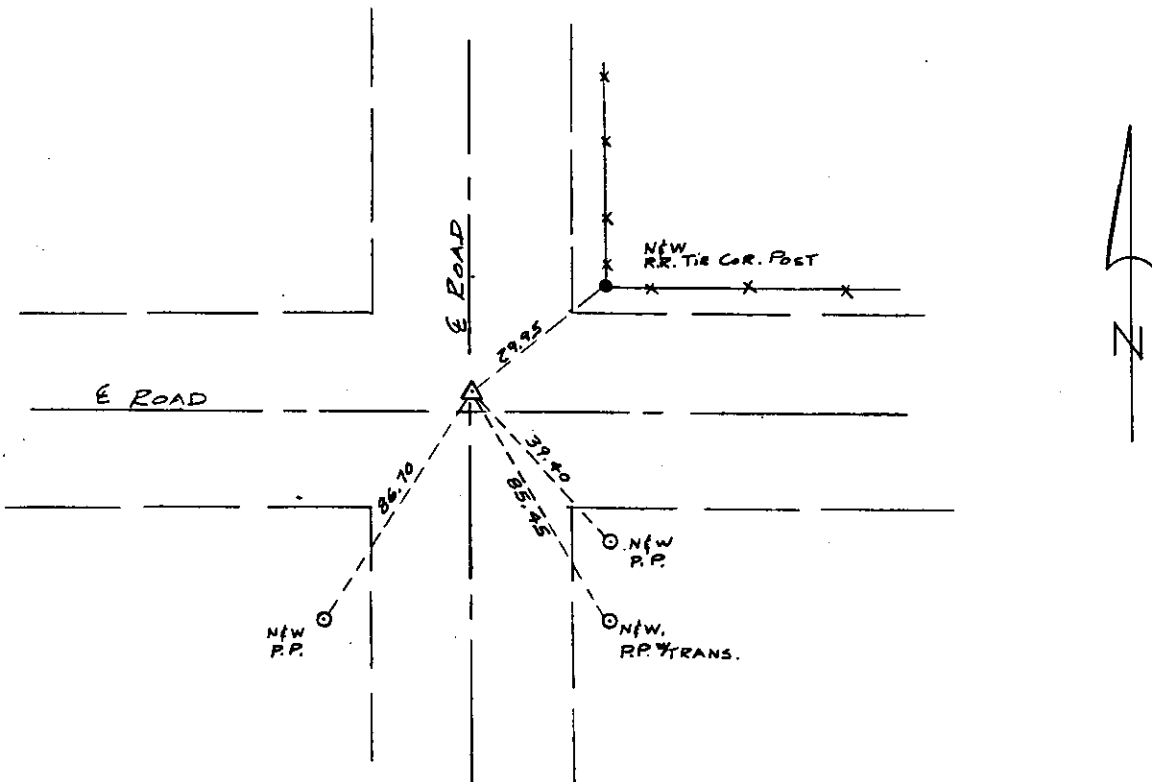
LOCATION Found standard G.L.O. with brass cap broken off and bent. Set
 1/2" x 24" long rebar with aluminum cap above vertical position
 S.3 S.2 4" below road surface.
 S.10 S.11

T.12N., R.62W.

DESCRIPTION OF MONUMENT AND ACCESSORIES ESTABLISHED TO PERPETUATE THE ORIGINAL LOCATION OF THIS CORNER:

See ties below.

**SKETCH, WITH COURSE AND DISTANCE TO ADJACENT CORNER IF DETERMINED IN THIS SURVEY.
 (May Sketch or Paste Reproduction on Reverse Side.)**



I, JOHN A. STEIL certify that I have carefully performed or reviewed the work done on the diagrammed corner as reported on this recordation form and approve the same.

John A. Steil
 Signature of Surveyor

2500
 Registration No.

STATE OF WYOMING,
 Office of Clerk and Recorder,
 County of Saramie

567999

This "corner record" was filed for record on the _____ day of FEB 15 1980, 19____, was noted on the cross-index plat and is assigned page No. _____, in book No. _____

James C. Whitehead
 County Official

Cross Index No. _____	T. _____	R. _____	Mer. _____
<u>E17</u>	<u>12</u>	<u>62</u>	Mer. _____
_____	T. _____	R. _____	Mer. _____
_____	T. _____	R. _____	Mer. _____
_____	T. _____	R. _____	Mer. _____
_____	T. _____	R. _____	Mer. _____
_____	T. _____	R. _____	Mer. _____

E-17 12-62

567999

Photographed.....
Indexed.....
Posted.....
Assessor.....